

M A T R I X I I I

The Maxwell Equations and Relativistic Magnetics

Let's take a look at the relativistic implications behind the equations for a waveguide:

E= Electric Field Vector
B= Magnetic Field Vector
 $w = 2 \pi f t$
 ∇ = DEL Operator

μ =Magnetic Constant
f= frequency t= time
 ϵ_0 = Electric Constant
 $\nabla \times$ = Orthogonal Hyperspace
Vectors
changing as function of
x,y,z

Equation 1: $\nabla \times E = -j\omega \mu \nabla \times B$ Equation 2: $\nabla \times B = -j\omega \epsilon_0 \nabla \times E$

Equation 1 means that the electric field E is a function of the change in the magnetic field B, it is orthogonal to it and hyperspatial in relation to B.

Equation 2 means that the magnetic field B is a function of the change in the electric field E, it is orthogonal to it and hyperspatial in relation to E.

Electromagnetics can be broken down into three (3) Orders:

1st Order Electromagnetics: "Real" electromagnetic fields and Hertzian waves. Travel at c, the speed of light. Function of $1/r^2$. "In-domain" fields. This is what people are conditioned to believe is the only aspect of EM fields.

2nd Order Electromagnetics: : "Imaginary" or hyperspatial electromagnetic fields. "Out of Domain" . A potential wave that does not express/reflect in 3-dimensional levels. No voltage, power or wavelength. Non-Hertzian signal travels at Superluminal speed. There are Longitudinal or Scalar, Standing Waves. Function of $1/r$.

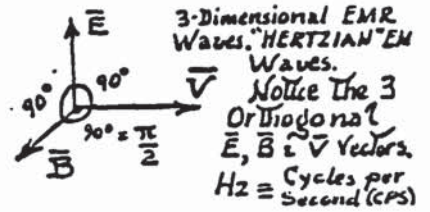
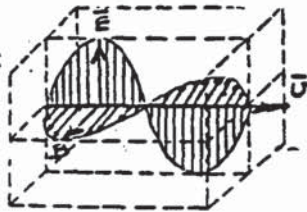
3rd Order Electromagnetics: Hyperspatial Sum of all potentials, simultaneously affecting the entire space-time continuum instantly. A relativistic Time-Stress Wave. Travels at infinite speed and has no wavelength. These are the so-called Solitons, Neutrinic Waves, and Tachyon Waves, as well as Tachyon Tensor Fields. *Tachyons respond to focused consciousness.*

MATRIX III

Orthodox Science and Tachyons

Orthodox science does not "recognize" tachyons as "real" particles, for they are superluminal in nature. They don't use the term tachyon, but use the particle names neutrino and soliton as a theoretical approach to conflicts that arise within the orthodox physics based on mutated Maxwell equations. A major piece of data is that Tachyons respond to consciousness.

First Order Wave Example:



Second Order Wave Example:



Third Order Wave Example:



Lesser Known Characteristics of E.L.F.

1. E.L.F. is a 9-dimensional magnetic field (imagine it as a magnetic bubble cloud)
2. E.L.F. fields are self-organizing.
3. E.L.F. can go through anything and is non-attenuating.
4. Cell DNA, particularly in the brain, stops E.L.F. fields.
5. The only beneficial frequencies are in the range of 7 -9 Hz